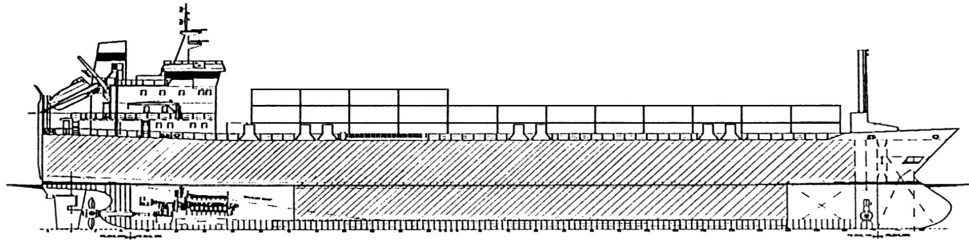




MARFRET MARIN

RoRo

IMO: 8912376 / Flag: Luxembourg



Hjorungavåg Verksted (Norway) Hull N°49
Delivery Sept. 1991

MAIN PARTICULARS

- Length over all 114.4 m
- Length between pp.....104.9 m
- Breadth18 m
- Depth to main deck 6.55 m
- Depth to weather deck.....12.4 m
- Draught, summer 6.17 m
- Service Speed 12 knots
(scantling draught, 90% MCR, 15% power margin)

CLASS

- BV, + 1A1 General Cargo Carrier RoRo, EO,
ICE- 1A, PET

TANK CAPACITIES (100%)

- Heavy fuel oil 180 Cst542.5 m³
- Marine gas oil.....60 m³
- Lubricating oil 26.4 m³
- Fresh water 35 m³
- Ballast water2307 m³

MAIN ENGINE

- WARTSILA VASA 16V32D (4 strokes)
Total rated power5 920 kw
(at a rated speed of 720 rpm)
- 1 x controlable pitch propeller diameter 4300 mm
- Bow thruster.....1 x 500 kw

FUEL CONSUMPTION

- Main engine1.1 MT/hour
(HFO 180 Cst at NCR apprx at 15.5 kn)
- Auxiliaries (MGO)..... 2 MT/day
- Cruising range apprx..... 7000 M

POWER SUPPLY

- Shaft Generator 1 x 750 kw
- Diesel Generator.....3 x 340 kw
- Emergency generator.....1 x 95 kw
- Crew 12 persons

CARRYING CAPACITIES

- Lower Hold 180 lm ~ 15 semi-trailers
 - Main deck..... 417 lm ~ 36 semi-trailers
 - Weather deck..... 370 lm ~ 29 semi-trailers
or143 TEU or 67 FEU
 - Stern door ramp13.5 m (incl flaps)
 - Max load.....60 T (distributed)
 - Lifting platform.....19 m x 4.2 m x 3.2 m clear
 - Max load..... 60 T
 - Ramp cover..... 46.5 m x 4.4
 - Uniform load..... 5 T/m
- Reefer plugs
- Weather deck 9
 - Main garage 6
- Capacity Accommodation
for drivers.....6 cabins of 2 persons

NAVIGATION EQUIPMENT

- 2 Radar Plant with ARPA
- 1 Auto Pilot / 1 Gyro compass
- 1 speed log
- 1 sounders
- 2 GPS
- 1 Inmarsat mini M