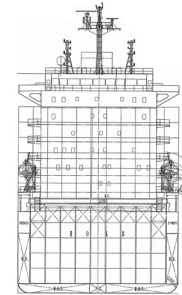
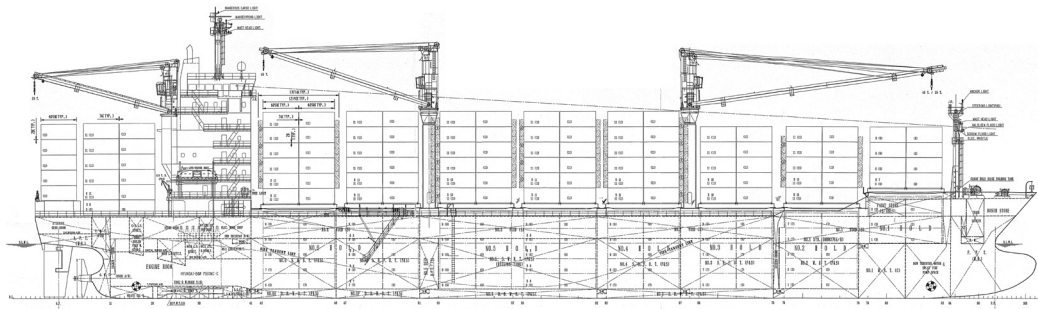




MARFRET GUYANE

1700 TEUS

IMO: 9362334 / Flag: RIF (French)



HYUNDAI Shipyard Hull N° 1872
Delivery Oct. 2007

MAIN PARTICULARS

- Length over all..... 170 m
- Length between pp..... 160 m
- Breadth..... 27.2 m
- Depth to main deck..... 14.0 m
- At shallow draft..... 6.5 m
- Deadweight..... 11021.3 tons
- At Draught, design..... 9.2 m
- Deadweight..... 20686 Ton
- At Draught, scantling..... 9.35 m
- Deadweight..... 21262 Ton
- Service Speed..... 19 knots
- (scantling draught, 90% MCR, 15% power margin)

CLASS

- BV, + HULL, + MACH, Container Ship, Unrestricted Navigation, + AUT-UMS, MON-SHAFT, INWATER SURVEY, AUT-PORT.

TANK CAPACITIES (100%)

- Heavy fuel oil..... 2700 m³
- Marine diesel oil..... 100 m³
- Lubricating oil..... 137 m³
- Fresh water..... 190 m³
- Ballast water..... 6500 m³

TONNAGE

- GT..... 17594
- NT..... 7181

MAIN ENGINE

- MAN B&W 7S60MC-C (2 strokes)
- Total rated power..... 15820 kw
- (at a rated speed of 105 rpm)
- Fixed-pitch propeller..... Blades
- Bow thruster..... 1 x 800 kw
- Stern thruster..... 1 x 800 kw

FUEL OIL CONSUMPTION OF MAIN ENGINE

- Cruising range..... apprx. 16200 NM
- Speed / ME consumption:
 - About 19.2 kn on abt. 64.6 mt HFO @ design draft on NCR with 15% sea margin
 - About 18.5 kn on abt. 56,5 mt HFO @ design draft on NCR with 15% sea margin
 - About 17.5 kn on abt. 48.8 mt HFO @ design draft on NCR with 15% sea margin
 - About 16.5 kn on abt. 44.1 mt HFO @ design draft on NCR with 15% sea margin
 - About 15.5 kn on abt. 41.5 mt HFO @ design draft on NCR with 15% sea margin
 - About 14.5 kn on abt 38.0 mt HFO @ design draft on NCR with 15% sea margin

POWER SUPPLY

- Diesel Generators..... 3 x 1450 kw
- Emergency Generator..... 1 x 125 kw

CARGO HATCH COVER

- Type..... Steel pontoon type
- Stack weight..... 70MT/20ft & 120MT/40ft
- Panel weight..... Max.40.0 tons of each panel (including container loose fittings)

CONTAINER CAPACITIES

With max. number of Containers
IMO visibility guideline

- On deck (6 tiers)..... 1127 TEU
- In hold..... 564 TEU
- Total..... 1691 TEU
- One 9'6" in hold

- Rows max. in holds/on hatches..... 9/11 Rows
- Tiers max. in holds/on hatches..... 5/6 Tiers

El. Plugs (for reefer Container)

- On deck..... 269 TEU
- In hold..... 149 TEU

- Stability (8.8 T/TEU hetero, at Ts)..... 1532 TEU
- Stability (14T/TEU homo. at Ts)..... 1149 TEU
- (based on 8 ft 6 inches, 45% Cont. VCG)

NAVIGATION EQUIPMENT

- 2 - Radar Plant with ARPA
- 1 - Auto Pilot / 2 Gyro compass
- 2 - DGPS navigator, 2 ECDIS
- 1 speed log dual axis
- 2 sounders

CARGO CRANES

3 electro-hydraulic deck cranes provided with sufficient outreach to serve all container stacks on board.

- Crane 1..... 45 t - 28 m / 25 t - 40 m
- Crane 2..... 45 t - 28 m
- Crane 3..... 25 t - 21 m